

# Chassis Replacement Instructions

This document describes how to remove and replace the chassis of a DX-series SnapExpansion unit from Overland Storage.

**WARNING:** To reduce the risk of electric shock or damage to equipment, always remove any power cords while working with the unit.

**AVERTISSEMENT:** Pour réduire le risque de choc électrique ou endommagement de l'équipement, retirez toujours les cordons électriques en travaillant avec l'appareil.

**CAUTION:** While working with the unit, observe standard Electrostatic Discharge (ESD) precautions to prevent damage to micro-circuitry or static-sensitive devices.



*NOTE: These instructions are for the chassis that has captive screws at the bottom of the flange. For units with the screws at the top of the flange, refer to document 10400404-001.*

## Prepare the Unit

### Power Off and Disconnect

1. At the head unit, use the Web Management Interface, select **System Maintenance > Reboot and Shutdown > Shutdown** to stop services and power it OFF. This also powers OFF all the expansion units.
2. When all the LEDs of all the units are off, disconnect the **power cords** from the expansion unit.
3. Disconnect the **SAS cables** from the unit noting if they were plugged into the IN or OUT socket.



### Remove the Front Bezel

Carefully take hold of the front bezel and pull it straight out from the unit until the magnets release. Set it aside.

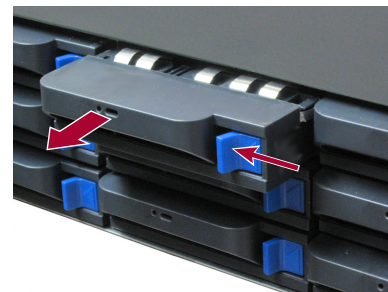


### Remove the Drives

**IMPORTANT:** Overland recommends that you remove the drive assemblies to lessen the unit's weight prior to removal.

*NOTE: Do not remove the disk drives from their carriers. Doing so voids the drive warranty.*

1. Press the release **button** on the right side of the carrier.
2. Using the built-in **handle**, pull the drive carrier out.
3. Set the **drive assembly** on an ESD-safe surface.
4. Repeat **Steps 1–3** for **all** remaining drive and blank carriers.

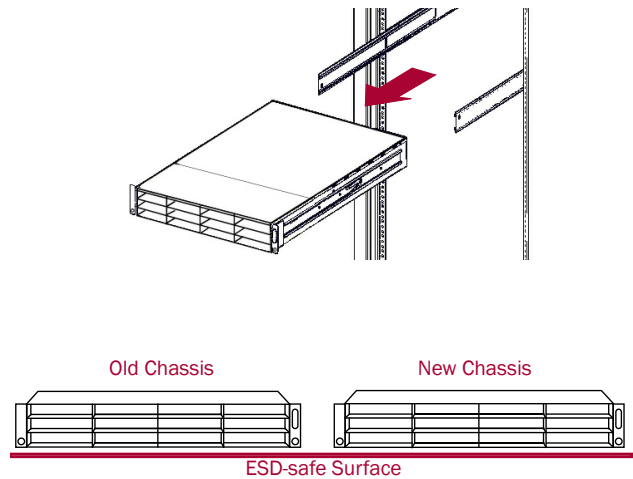


## Remove Unit from Rack

**WARNING:** It is recommended that a mechanical lifter (or at least two people) be used during rack installation or removal to prevent injury.

**AVERTISSEMENT:** Pour éviter toute blessure il est recommandé qu'un monte-charge (ou deux personnes au moins) soit utilisé lors de l'installation ou de l'enlèvement du support.

1. Release the two **captive screws** on the bottom front left and right sides, and slide the chassis out until it stops.
2. Release the rail **locks** and slide the chassis out onto the lifter.
3. Move the chassis onto a secure **ESD-safe surface**.
4. Unpack the **new chassis** and place it next to the old chassis.

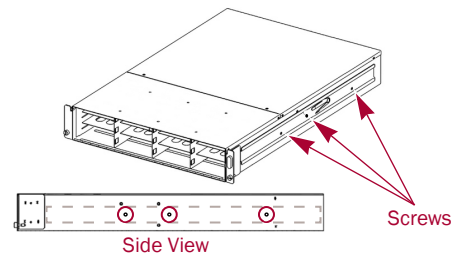


## Transfer Components

### Move Inner Sliding Rails

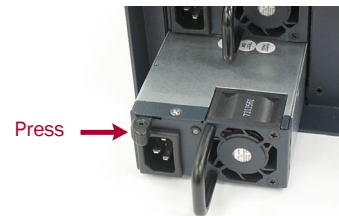
You need to move the attached inner slide rails to the new chassis:

1. Remove and retain the **three screws** holding one of the rails on the side of the old chassis.
2. Position the rail on the same side on the **new chassis**, and secure it with the **retained screws**.
3. Repeat **Steps 1–2** for the **other rail**.



### Move the Power Supplies

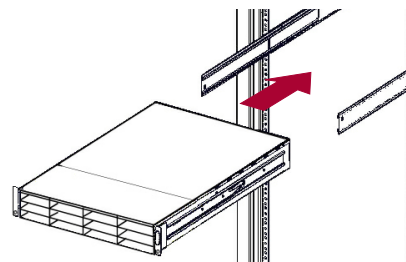
1. While pressing the release latch toward the handle, pull the **power supply handle** to slide out of the old chassis.
2. Slide the power supply into a bay of the **new chassis** until it locks (clicks).
3. Repeat steps **Steps 1–2** for the **remaining** power supply.



## Install New Chassis in Rack


### Install the Chassis

1. Fully extend the **middle rails** out of the rack.
2. Using the mechanical lifter, position the **chassis** in front of the middle rails.
3. Connect the expansion rails into the middle rails, and slide the **unit** all the way to the rear.
4. Secure the unit using the **two captive screws** at the bottom of the flanges.



## Install Drives

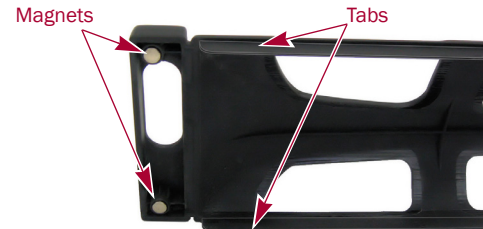
1. Position a **drive carrier assembly** in front of its empty slot.
2. Slide in the drive assembly until the **latch** clicks, locking it in the slot.
3. Repeat **Steps 1–2** for **each** remaining drive carrier.

 **IMPORTANT:** To maintain proper airflow and cooling, a drive assembly or a blank carrier must be installed in every slot. No empty slots are allowed.



## Attach the Bezel

1. Position the **bezel** with the tabs aligned inside the top and bottom edges of the chassis.
2. Move the bezel toward the unit until the **magnets** grab.
3. Verify that the bezel is **aligned** properly with all the LEDs visible and the Power Panel on the right side positioned within the hole in the flange.



## Attach Cables and Power Cords

1. Reattach the **SAS cables** to the same connections previously used.
2. Attach the **power cords**.
3. Power ON the **head unit**.  
This also powers ON the expansion units.



## Complete the Exchange

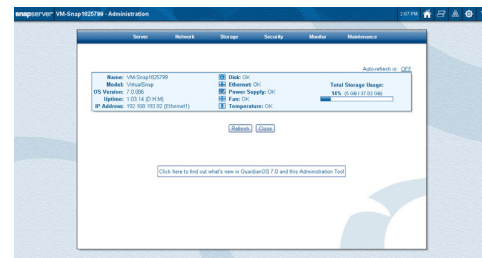
### Validate the System

Log onto the Web Management Interface and verify that the connections and settings are correct, and that the DX-series head unit can see the expansion unit.

Check the front LEDs for flashing that may indicate errors.

If there are any problems, contact Overland Technical Support:

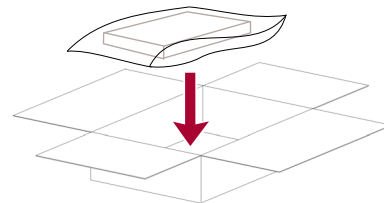
<http://docs.overlandstorage.com/support>



### Return Old Chassis to Overland

For return shipping instructions and RMA number, go to:  
<http://docs.overlandstorage.com/return-instructions>.

1. Place the **old chassis** in the anti-static bag and put it in the replacement part's box.  
Verify that the packaging materials were reinstalled correctly to prevent damage during shipping.
2. Follow the RMA instructions to return the part to **Overland Storage**.



<http://support.overlandstorage.com>

You can get additional technical support on the Internet at the **Overland Storage Support web page**, or by contacting Overland Storage using the information found on the **Contact Us** page on our web site.