

Add-on/Spare PCIe Card Instructions

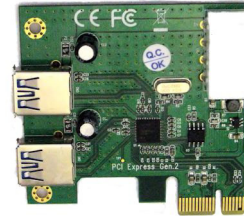
This document describes how to add a new PCIe card or remove and replace an existing PCIe card in a SnapServer XSD 40 from Overland Storage.

WARNING: To reduce the risk of electric shock or damage to equipment, always remove any power cords while working with the unit.

WARNUNG: Um das Risiko eines elektrischen Schlags oder Schäden am Gerät zu vermeiden, ziehen Sie stets den Netzstecker, bevor Sie an der Einheit arbeiten.

AVERTISSEMENT: Pour réduire le risque de choc électrique ou endommagement de l'équipement, retirez toujours les cordons électriques en travaillant avec l'appareil.

CAUTION: While working with the unit, observe standard Electrostatic Discharge (ESD) precautions to prevent damage to micro-circuitry or static-sensitive devices.



Register the Add-on Card

When **adding** a PCIe card to your unit, you must first register it to activate the warranty. Technical and warranty support are **not available** until this is done:

1. Go to the **Overland Storage** website
<http://www.overlandstorage.com/>
2. Select **Service & Support > My Products**.
3. At the [Site Login](#), enter your **e-mail address** and **password**, and click **GO**.
4. Click the **Manage Products** button.
5. From the Product Selector drop-down list, select the **XSD 40** in which you are installing the PCIe card.
6. Click **Add a Component**.
7. Enter the PCIe card **information**.
8. Click **Save & Exit**.

IMPORTANT: Your warranty certificate will be emailed to you. Follow the instructions included in the email to complete the registration process.



Prepare the Unit

Power Off and Disconnect Cables

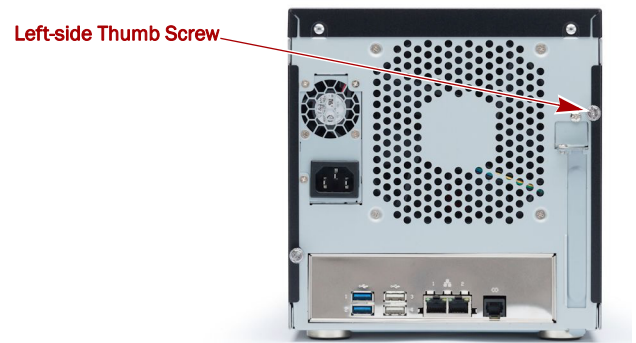
1. Briefly press the **Power button** on the front.
2. When all the front LEDs are off, disconnect the **power cord**.
3. Disconnect all the **cables** from the unit.



Remove the Left-side Panel

The PCIe card is accessed via the left-side panel when viewed from the front.

1. On the back of the unit, remove and retain the thumb screw securing the side panel.
2. Slide the side panel towards the back of the unit until the anchors release and the panel is free to move sideways.
3. Set the panel on a secure surface.

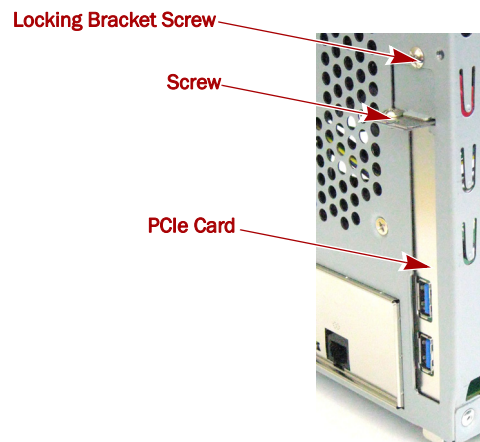


Install/Swap PCIe Card

Remove the old PCIe Card

This process applies only to replacing an existing PCIe card so a new PCIe card can be installed. To install a new PCIe card, proceed to [“Remove the Slot Cover.”](#)

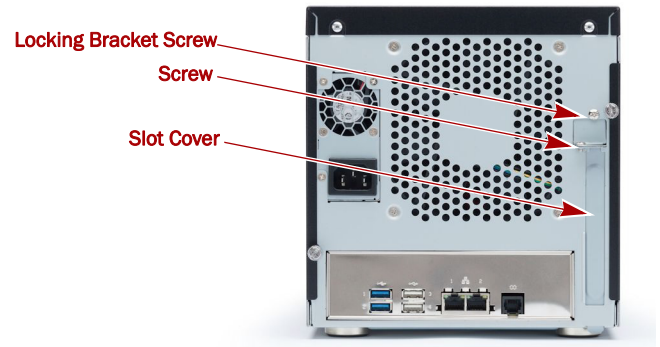
1. Remove and retain the **screw** securing the PCIe card to the locking bracket.
2. Loosen and retain the screw securing the **locking bracket** to remove the locking bracket from the chassis.
3. Remove the **PCIe card** by pulling it straight up from the board and out of the left-side of the unit.



Remove the Slot Cover

This process applies only to units with no PCIe card installed. To install a PCIe card, proceed to [“Install the PCIe Card.”](#)

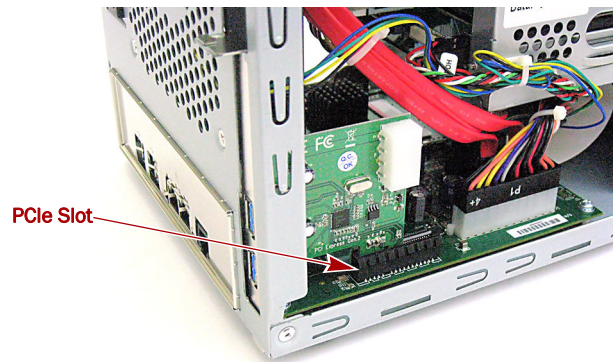
1. In the new chassis, remove the **slot cover** where the card is supposed to go.
2. Remove the **screw** securing the slot cover to the locking bracket.
3. Remove the **locking bracket** by loosening the screw securing the bracket to the chassis.
4. Retain both screws, the locking bracket, and cover.



Install the PCIe Card

In the new chassis, install the PCIe card:

1. Seat the PCIe card in the same slot on the board and feed the connectors through the back panel of the chassis.
2. Reinstall the locking bracket by tightening the screw to secure the PCIe card.
3. Thread the screw through the card to secure the card to the locking bracket.



Reassemble the Unit

Reinstall the Side Panel

1. Position the side panel with no more than **one-half inch** (1.25 cm) extending out over the rear of the unit.
2. Align the tabs on the panel with the slots on the side of the unit.
3. Push the panel sideways to be flush with the side of the unit, then slide the panel towards the front of the unit. Ensure that the tabs are seated securely in the slots.
4. Reinstall the thumb screw on the back of the unit to secure the panel.



IMPORTANT: If this is a **new appliance install**, continue with the *SnapServer XSD 40 Quick Start Guide* instructions.

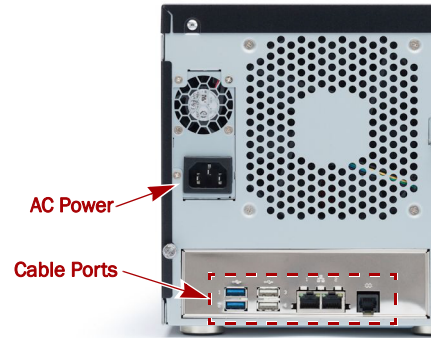


Reattach Cables and Power Cord

1. Reattach **all the cables** (except the power cord) to the same connections previously used.
2. Attach the **power cord**.
3. At the front, press the **power button** to power it ON.



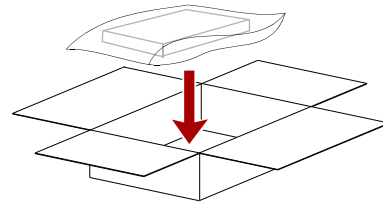
IMPORTANT: If this is a **new appliance install**, continue with the *SnapServer XSD 40 Quick Start Guide* instructions.



Return Old Parts to Overland

1. Place the **old part** in the anti-static bag and put it in the replacement part's box.
2. Use an RMA to return the part to **Overland Storage**.

For return shipping details and RMA number, go to:
<http://docs.overlandstorage.com/return-instructions>



<http://support.overlandstorage.com>

You can get additional technical support on the Internet at the [Overland Storage Support web page](http://support.overlandstorage.com), or by contacting Overland Storage using the information found on the [Contact Us](#) page on our web site.