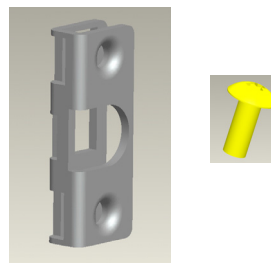


Round-Holed Rack Adapter Kit Instructions

This document describes how to use the round-holed adapter kit for both threaded and non-threaded round-holed racks with the sliding rail kit for SnapServer XSR-Series appliances and SnapScale X2 nodes from Overland Storage.

The kit consists of four conversion brackets and four M6x15mm center screws.



CAUTION: While working with the unit, observe standard Electrostatic Discharge (ESD) precautions to prevent damage to micro-circuitry or static-sensitive devices.

Install Adapter Brackets

1. Slide a conversion **bracket** (4 total) onto the rail anchors on both ends of both rails.
2. Use the new **center screws** to attach the rails to the rack:
 - a. Position the front of one of the **rail sets** in line with the front vertical rail mounting holes.
 - b. Insert a **M6x15mm screw** in the center hole and loosely tighten it.
 - c. At the **rear**, slide the outer rail in or out to fit the **rail set** between the vertical rails and repeat **Step b** to loosely secure it.
Make sure the rear holes are the same height as the front holes so the rail is level.
 - d. For the other **rail**, repeat **Steps a-c**.
 - e. Tighten all **four screws**.
3. Using the regular rail kit **screws** in the first and third holes in the front flanges, secure appliance to rack.

Continue with the installation as detailed in the Quick Start Guide.

