

# Spare Fan Instructions

This document describes how to remove and replace a fan in a NEO Agility appliance from Overland Storage.

**WARNING:** To reduce the risk of electric shock or damage to equipment, always remove any power cords while working with the appliance.

**WARNUNG:** Um das Risiko eines elektrischen Schlags oder Schäden am Gerät zu vermeiden, ziehen Sie stets den Netzstecker, bevor Sie an der Einheit arbeiten.

**AVERTISSEMENT:** Pour réduire le risque de choc électrique ou endommagement de l'équipement, retirez toujours les cordons électriques en travaillant avec l'appareil.

**CAUTION:** While working with the appliance, observe standard Electrostatic Discharge (ESD) precautions to prevent damage to micro-circuitry or static-sensitive devices.

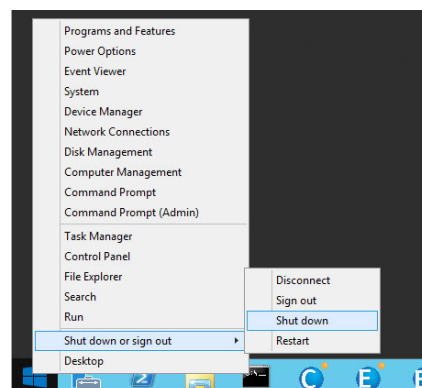
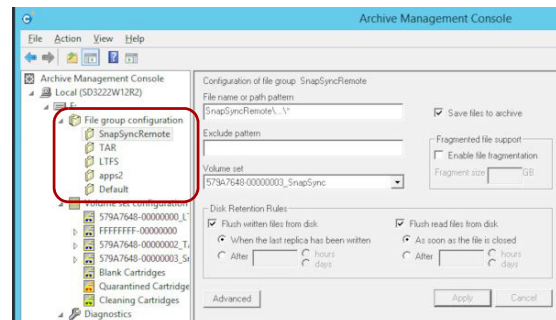


## Prepare the Appliance

### Power Appliance Off

**CAUTION:** Make sure all processes are inactive and idle before shutting down the NEO Agility appliance before continuing to prevent data corruption and loss.

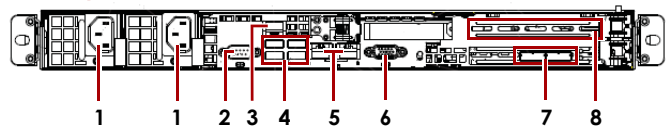
1. Log into the appliance as an **administrator**.  
Use either console or remote desktop as appropriate.
2. Verify that all host processes are **idle**.
3. From the **Agility Management Console**, modify the **File group configuration** by disabling (unchecking) the **Save File to Archive** option for each of the configuration folders listed there.
4. Right-click the Windows logo in the lower-left corner and select **Shutdown or sign out > Shutdown**.  
If running an earlier version of Windows, follow the normal shutdown procedure for that version.



## Disconnect Cables

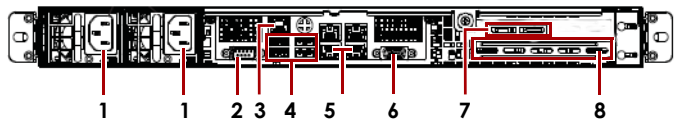
1. When all the LEDs are OFF, disconnect all the **power cords** (1).
2. Disconnect all **data cables** from the appliance.  
Make note of which ports the cables were connected to.

### NEO Agility 48



- |                       |                   |
|-----------------------|-------------------|
| 1 - AC Power          | 5 - 1GbE Port (2) |
| 2 - VGA Port          | 6 - Serial Port   |
| 3 - IPMI Port         | 7 - SAS Ports (2) |
| 4 - USB 3.0 Ports (4) | 8 - Optional card |

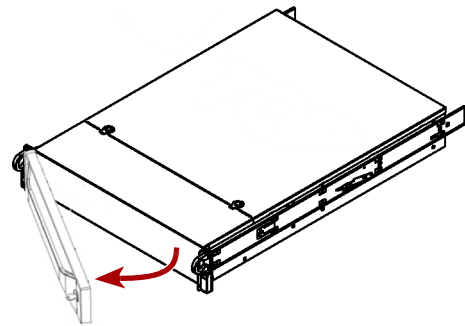
### NEO Agility 80 / 160



- |                       |                        |
|-----------------------|------------------------|
| 1 - AC Power          | 5 - 1GbE Port (2)      |
| 2 - VGA Port          | 6 - Serial Port        |
| 3 - IPMI Port         | 7 - FC / SAS Ports (2) |
| 4 - USB 3.0 Ports (4) | 8 - Optional card      |

## Remove the Bezel

1. If needed, **unlock** the bezel using the supplied key.
2. Slide the latch to the right to release the **bezel**.
3. Swing the **bezel** out, remove it from the appliance, and set it aside.



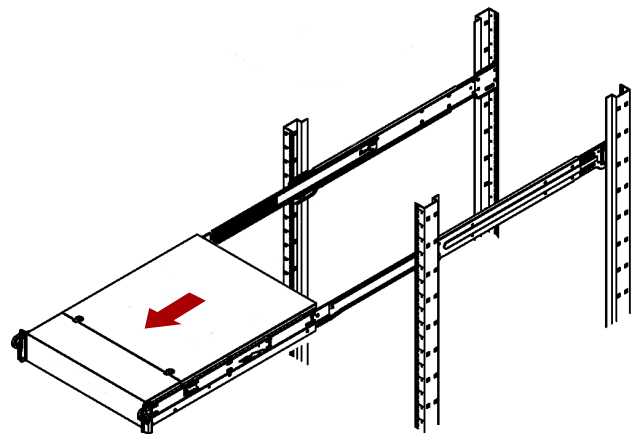
## Remove Appliance from Rack

**WARNING:** It is recommended that a mechanical lifter (or at least two people) be used during rack installation or removal to prevent injury.

**WARNUNG:** Um Verletzungen zu vermeiden, empfehlen wir zur Rack-Installation oder -Deinstallation die Nutzung einer mechanischen Hebehilfe (oder mindestens zwei Personen).

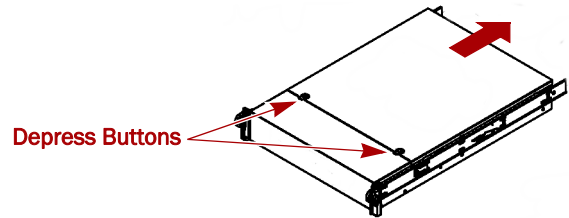
**AVERTISSEMENT:** Pour éviter toute blessure il est recommandé qu'un monte-charge (ou deux personnes au moins) soit utilisé lors de l'installation ou de l'enlèvement du support.

1. Release the two **captive screws** on the front of the appliance flanges that secure the appliance to the rack.
2. With a lifter positioned in front of the array, fully extend the rails to slide the **chassis** out onto the lifter.
3. Depress the **locking tabs** on each side to release the appliance from the rail assembly.
4. Place on an **ESD-safe** surface.



## Remove Top Panel

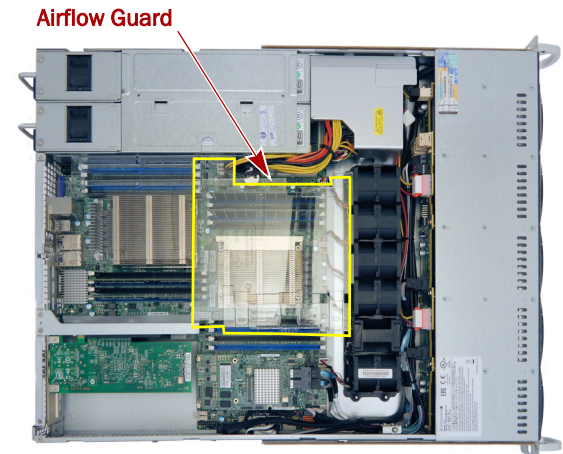
1. With the NEO Agility on a secure surface, press down the **two buttons** on the top panel.
2. While continuing to depress the two top buttons, **slide the top panel** toward the rear and lift it off.  
Only about **one-half inch** (1.25cm) movement is required.



## Replace Fan

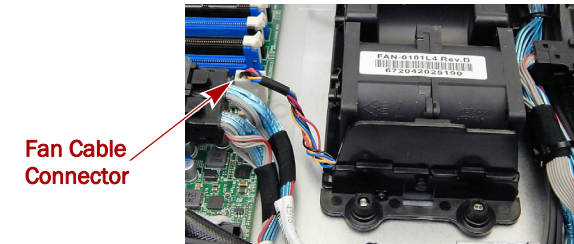
### Remove Air Flow Guard

1. Note the position of the **clear airflow guard** in the chassis.
2. Lift the **guard** and remove it.
3. Place the guard on a **secure surface**.



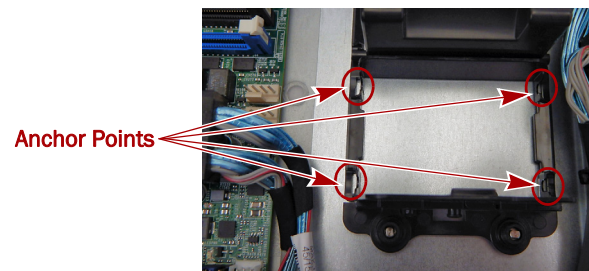
### Remove Old Fan

1. Identify the **fan** being replaced and its **cable connector**.
2. Gently rock the **fan cable connector** from side to side and lift it to disconnect it.
3. Lift the **fan** from its four seated anchor points and set it aside for return to Overland.



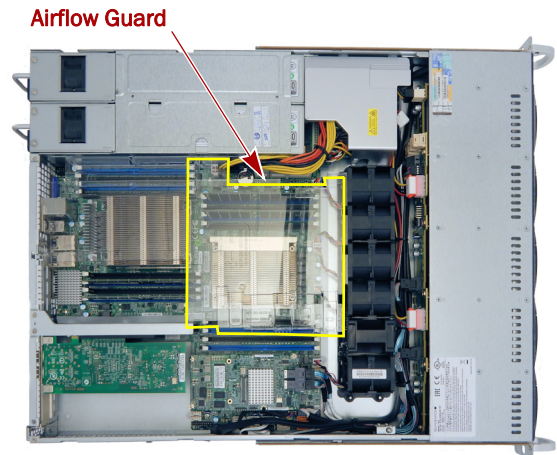
### Install New Fan

1. Place the **new fan** in the previous fan's location seating it securely on the four anchor points.
2. Attach the **fan cable connector** to the same plug as the previous fan cable connector, making sure to seat the connector securely on the board.



## Reinstall Airflow Guard

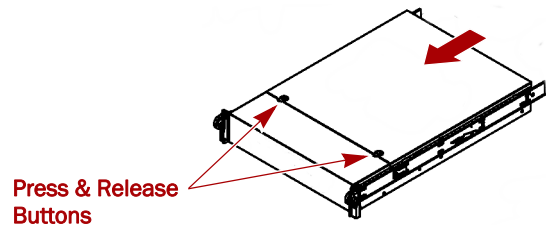
Replace the clear **airflow guard** in the chassis in its previous location, verifying it is seated correctly.



## Complete the Replacement

### Reinstall Top Panel

1. Align the top panel over the appliance with no more than **one-half inch** (1.25cm) extending out over the rear and gently press it down onto the appliance.
2. Slide the panel **forward** into position.
3. Press and release the **two top panel buttons** to make sure the panel is securely seated.

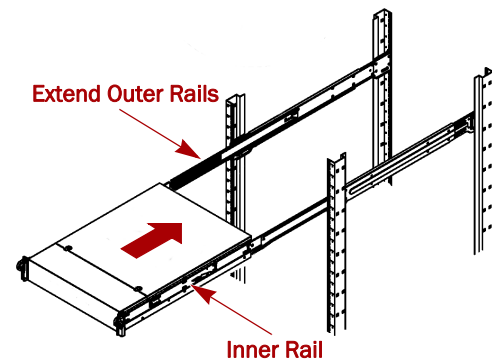


### Reinstall Appliance in Rack

1. Fully extend the **outer rails** from the rack to the front.
2. Using the mechanical lifter, position the **appliance** in front of the rack, aligning the appliance's **inner rails** with the rack **outer rails**.
3. Slide the chassis rails into the rail racks, keeping the pressure even on both sides, until the **locking tabs** click into place.

**NOTE:** You may need to depress the locking tabs when reinstalling the appliance.

4. Secure the two **captive screws** on the front of the appliance flanges that secure the appliance to the rack.
5. After the appliance is secured in the rack, verify that all **drives** are secure in their bays and have not become unseated.



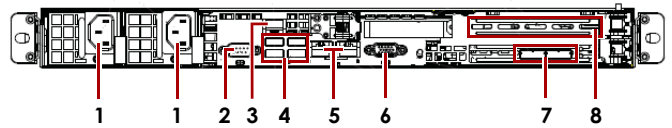
## Reconnect Cables and Power On

1. Reconnect **fibre channel (FC) or SAS cables** from the FC/SAS ports on the NEO library tape drives to the NEO Agility appliance.

**NOTE:** For FC environments, the interconnect may be from an FC switch.

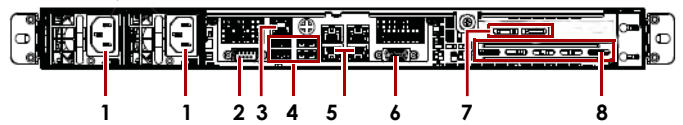
2. Reconnect the **network cables** to the Ethernet ports.
3. If required for **console connection**, reattach a video monitor cable to the VGA port and keyboard/mouse cable to a USB port.
4. If needed, use the **IPMI port** for hardware monitoring.
5. Reattach both **power cords** to the AC power sockets on the appliance.
6. Plug the **power cords** into a UPS appliance or a properly grounded AC power source.
7. Press the **power switch** to power the appliance back ON.

NEO Agility 48



- |                       |                   |
|-----------------------|-------------------|
| 1 - AC Power          | 5 - 1GbE Port (2) |
| 2 - VGA Port          | 6 - Serial Port   |
| 3 - IPMI Port         | 7 - SAS Ports (2) |
| 4 - USB 3.0 Ports (4) | 8 - Optional card |

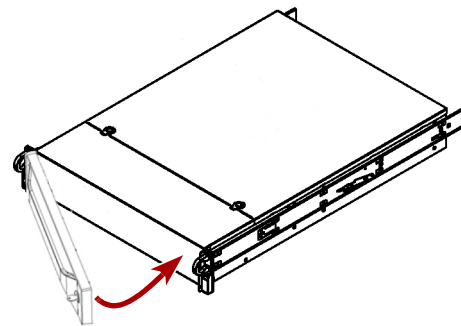
NEO Agility 80 / 160



- |                       |                        |
|-----------------------|------------------------|
| 1 - AC Power          | 5 - 1GbE Port (2)      |
| 2 - VGA Port          | 6 - Serial Port        |
| 3 - IPMI Port         | 7 - FC / SAS Ports (2) |
| 4 - USB 3.0 Ports (4) | 8 - Optional card      |

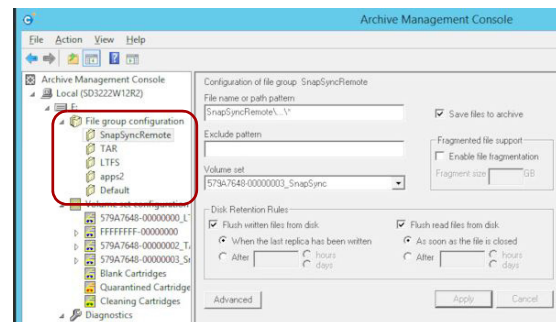
## Attach the Bezel

1. Insert the bezel tabs into the **flanges** on the front left of the appliance.
2. Swing the **bezel** into place on the right until the latch locks (clicks).
3. If needed, **lock** the bezel using the supplied key.



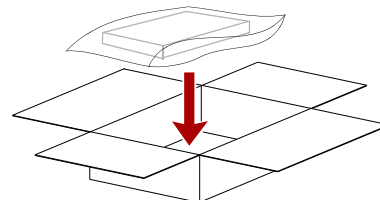
## Resume Saving Files to Archive

1. Open the **Agility Management Console**.
2. Modify the **File group configuration** by enabling (checking) the **Save File to Archive** option for each of the folders listed there.



## Return Old Parts to Overland

1. Place the **old part** in the anti-static bag and put it in the replacement part's box.
  2. Use the existing **packing material** to secure it in the box.
  3. Use an RMA to return the part to **Overland Storage**.
- For return shipping details and RMA number, go to: <http://docs.overlandstorage.com/return-instructions>.



<http://support.overlandstorage.com>

You can get additional technical support on the Internet at the **Overland Storage Support web page**, or by contacting Overland Storage using the information found on the **Contact Us** page on our web site.